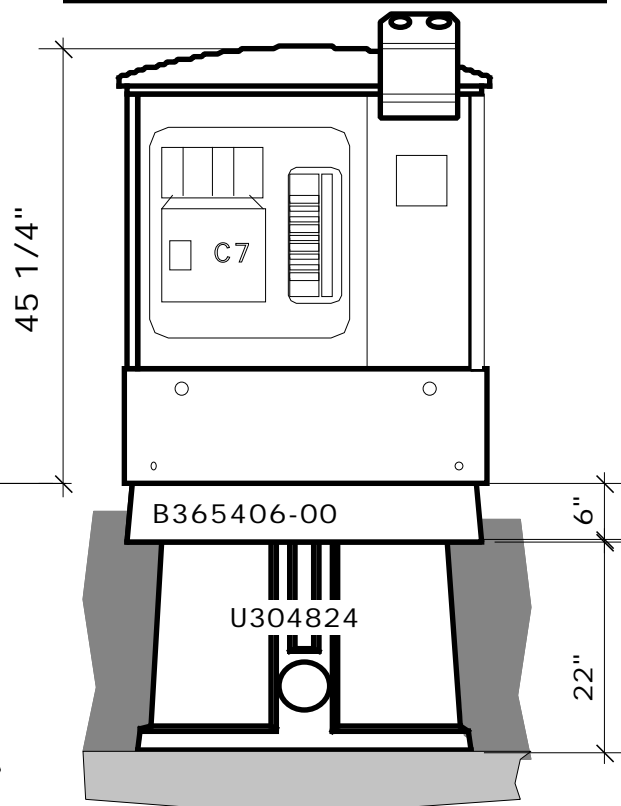
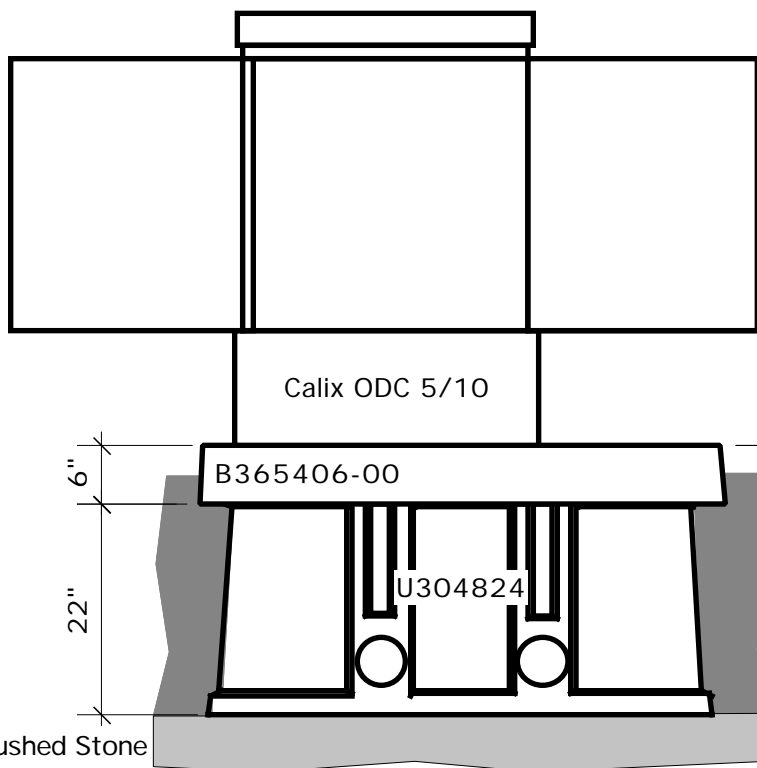


Note: Cabinet hangs over edge of base on each side 7/8"

Tunnel Mill Polymer, Inc.	Action	By	Date
	Drawn	BD	12/4/98
	Checked	SD	12/7/98
	Revised	DO	1/8/01
	Revised		
Calix ODC 5 / 10 on B365406-00 on U304824 Elevation - Planview	Drawing Number	Revision	
	DBDAAA	A	
	A digital version of this drawing can be downloaded on the web @ www.tunnelmill.com		
<p>13"</p> <p>32"</p> <p>Aluminum access panel cover with safety tread</p>	<p>5" 5"</p> <p>29"</p> <p>18"</p> <p>Access opening</p>		
The aluminum access panel, with safety tread plate, covers an opening as shown.			
View .dwg file		Return to Catalog	



Crushed Stone
Bed-6" deep